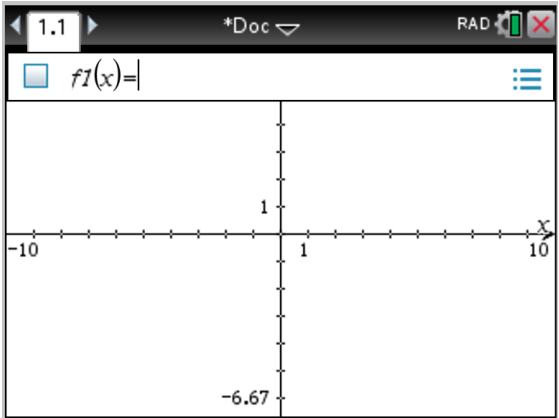


Ti Nspire

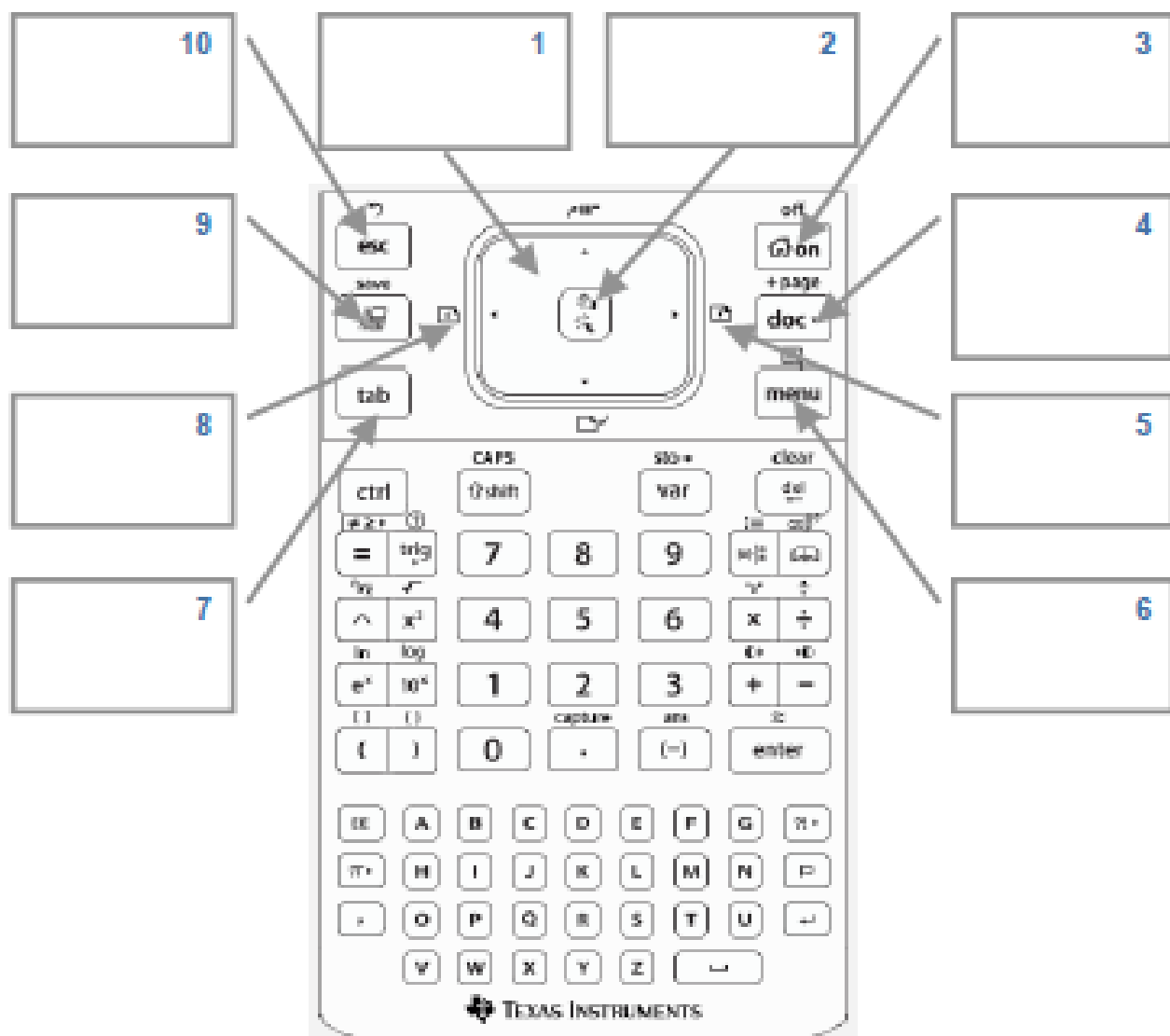
Teacher Practice Activities





Activity Overview:

In this activity you will become familiar with the most commonly used keys on the TI-Nspire™ CX handheld.





Activity Overview:

In this activity, you will become familiar with the layout of the TI-Nspire™ CX handheld.

Step 1:

Locate the Touchpad. The Touchpad is used to navigate the cursor around the screen. What appears in the center of the Touchpad?

Step 2:

Locate the keys to the left of the Touchpad. How do some of these keys compare in name and location to keys on a computer keyboard?

Step 3:

Note the light blue or yellow color of the commands that appear above many of the keys. Which key do you push to access the light blue or yellow options on the key pad?

Step 4:

Many of the traditional shortcut keys used with computer software are available on a TI-Nspire handheld. For example, ctrl C and ctrl V are used to “copy” and “paste,” respectively.

Step 5:

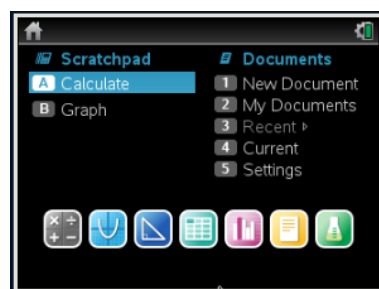
Note the colors of various keys and the location of the alpha keys. What do you notice about the arrangement of the keys?

Step 6:

Where are the buttons for adding, subtracting, multiplying, and dividing located?

Step 7:

Press on to turn on the handheld. If the Home Screen is not displayed, press on again. Use the tab key to move to each of the Home Screen options. Note the applications available on the bottom row of the Home Screen.





Step 8:

Note the Scratchpad options available on the left hand side of the screen and the icon in front of the Scratchpad. Locate the Scratchpad key on the handheld.



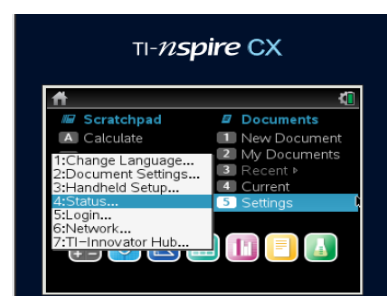
Step 9:

Select Settings > Status from the Home Screen. You will find the available memory and the battery status noted on the screen. Press **ESC** or press **OK** to choose OK to exit the Status screen.



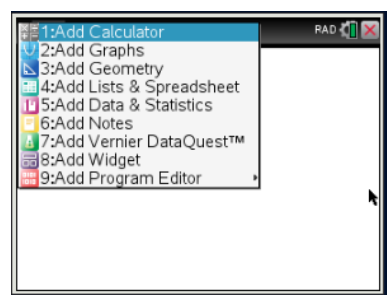
Step 10:

Select Settings > Document Settings. Explore the options available. Press **ESC** or using the Touchpad, move to OK and press **OK** to exit the Document Settings menu.



Step 11:

From the Home Screen, select New Document to start a new document. If prompted to save the current document, select No. Choose Add Calculator. This Calculator application page is the first page of the first problem in this new document. The tab indicating problem one, page 1 (1.1) is displayed in the top left corner of the screen.



Step 12:

Using the Touchpad, move the cursor to the icon to the left of the red X in the top right hand corner of the screen. What information is provided?





Activity Overview:

This activity explores various menus and templates available in the Calculator application.

Step 1:

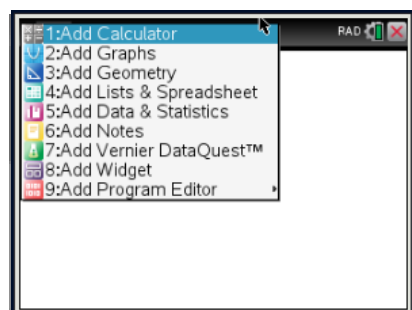
Press **2nd** **ON**, and select New Document to start a new document.

Step 2:

Choose Add Calculator.

Note: To add a new Calculator page to an existing document, press **ctrl** **doc** and choose Add Calculator.

Alternatively, press **2nd** **ON** and select .



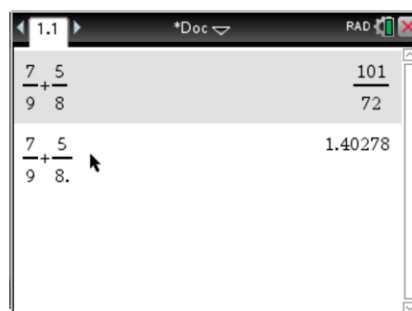
Tech Tip: To adjust the screen contrast, hold down the **ctrl** key and press **+** repeatedly to darken or press **-** repeatedly to lighten the screen.

Many of the traditional shortcuts used with computer software are available on a TI-Nspire™ handheld. For example, **ctrl** **Z** and **ctrl** **Y** are used to "undo" and "redo" actions, respectively.

Step 3:

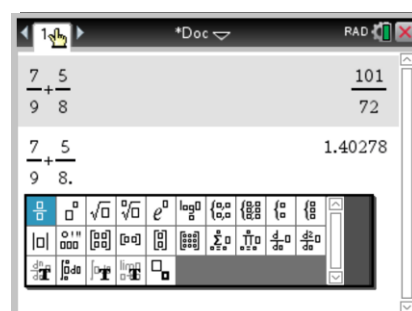
Determine the sum of two fractions. Type $7 \div 9 + 5 \div 8$

Press **enter**. To display the result in decimal form, press **ctrl** **enter**.



Step 4:

To enter a fraction using the fraction template, press **2nd** **math** to access the math templates. Select the fraction template.





Step 5:

Enter the numerator and denominator values. Use the down arrow key on the Touchpad or press **tab** to move from numerator to denominator. Press the right arrow key on the Touchpad to move the cursor to the right of the fraction template.

Press **+** or **-**. From the templates, select the fraction template again. Enter the numerator and denominator, and press **enter**.

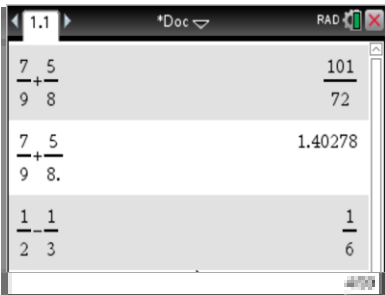
Note: The fraction template can also be accessed by pressing **ctrl** **+**.



Step 6:

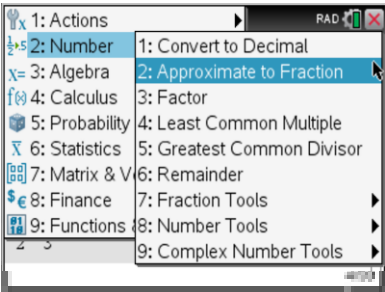
Enter another operation that includes fractions but add a decimal after any numerator or denominator value. The result is in decimal form.

Note: The default Display Digits setting is Float 6.



Step 7:

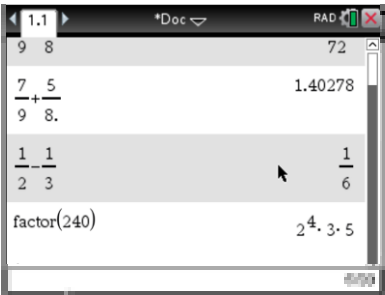
To convert the decimal to a fraction, select **Menu > Number > Approximate to Fraction**, and press **enter**.



Step 8:

Find the factors of 240 by selecting **Menu > Number > Factor**. Type the number, and press **enter**.

Note: The Least Common Multiple and Greatest Common Divisor commands are also located in the Number menu.



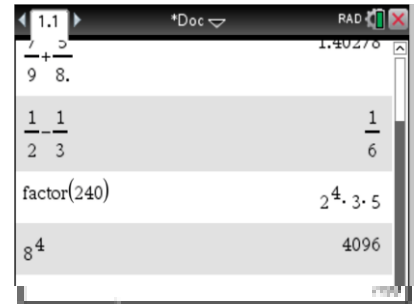


Step 9:

To raise a number to a power, first enter the base. Press $\boxed{\wedge}$, and enter the exponent. Press $\boxed{\text{enter}}$.

Note: The cursor is still in the exponent template after the exponent has been entered. Press the right arrow key on the Touchpad to move the cursor out of the exponent template.

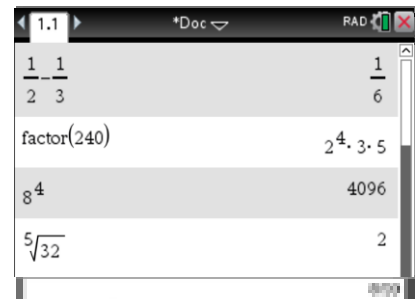
Note: The exponent template is also located in the math templates.



Step 10:

To determine the root of a number, press $\boxed{\text{ctrl}}$ $\boxed{x^{\frac{1}{n}}}$ for the square root or $\boxed{\text{ctrl}}$ $\boxed{\wedge}$ for the n th root.

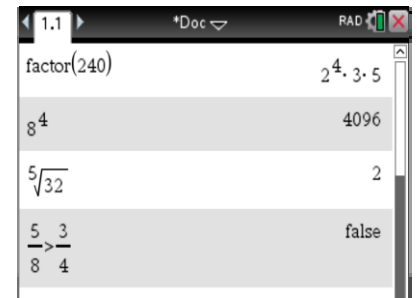
Note: The square root and n th root templates are also located in the math templates.



Step 11:

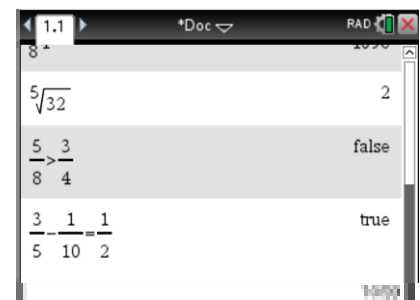
To check the truth value of a statement, enter the statement, and then press $\boxed{\text{enter}}$.

Note: To access the Inequality symbols, press $\boxed{\text{ctrl}}$ $\boxed{=}$.



Step 12:

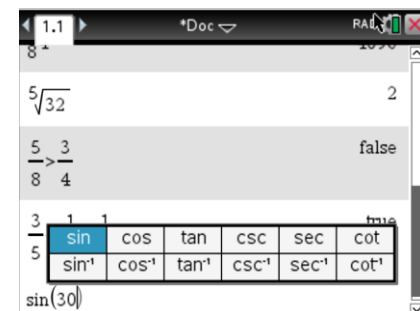
Move the cursor over the icon to the left of the X in the upper-right corner of the screen to display the Angle setting. The current Angle setting is Radian.



Step 13:

A trigonometric ratio of an angle value given in degrees can be calculated without changing the Angle setting to degrees.

Press $\boxed{\text{2nd}}$ to access the trigonometric ratios, and select the required ratio using the Touchpad. After entering the angle to be evaluated, press $\boxed{\text{ctrl}}$ $\boxed{\text{2nd}}$ to access the symbol palette. Select the degree symbol and then press $\boxed{\text{enter}}$.

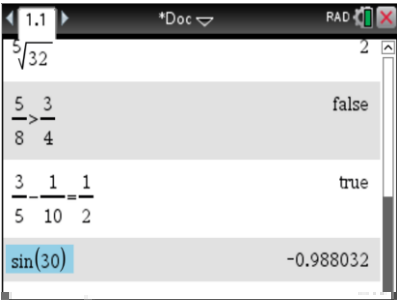




Step 14:

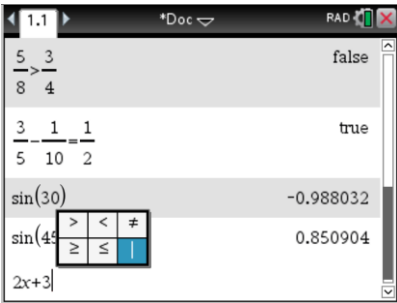
To copy and paste a previous operation or result to the current entry line, press **⌘** on the Touchpad until the operation or result is highlighted.

Press **enter** to paste the chosen operation or result (In this example, $\sin(30^\circ)$) into the current entry line. Edit as needed, and press **enter** to execute the new operation.



Step 15:

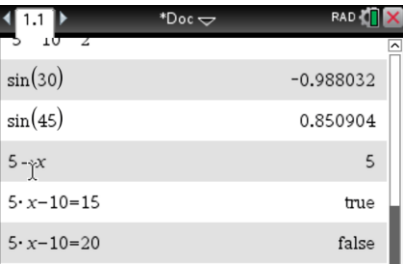
To check an answer to an equation or to evaluate an expression, use the "such that" operator. Press **ctrl** **=** to access the operator.



Step 16:

To store a value to a variable, enter the value and press **ctrl** **var** (store). Type the variable name and press **enter**.

The variable may now be used in computations and is accessed by typing the name of the variable or by pressing **var** and selecting the variable name.



Frequently Used Commands TI Nspire

- Ctrl G – open a new function
- Ctrl T – Open a table
- Ctrl Z – to undo a step ***
- Ctrl C- Copy an entry
- Ctrl V – To paste
- To display Frac as a Dec – Ctrl enter
- To open a label space – Ctrl menu